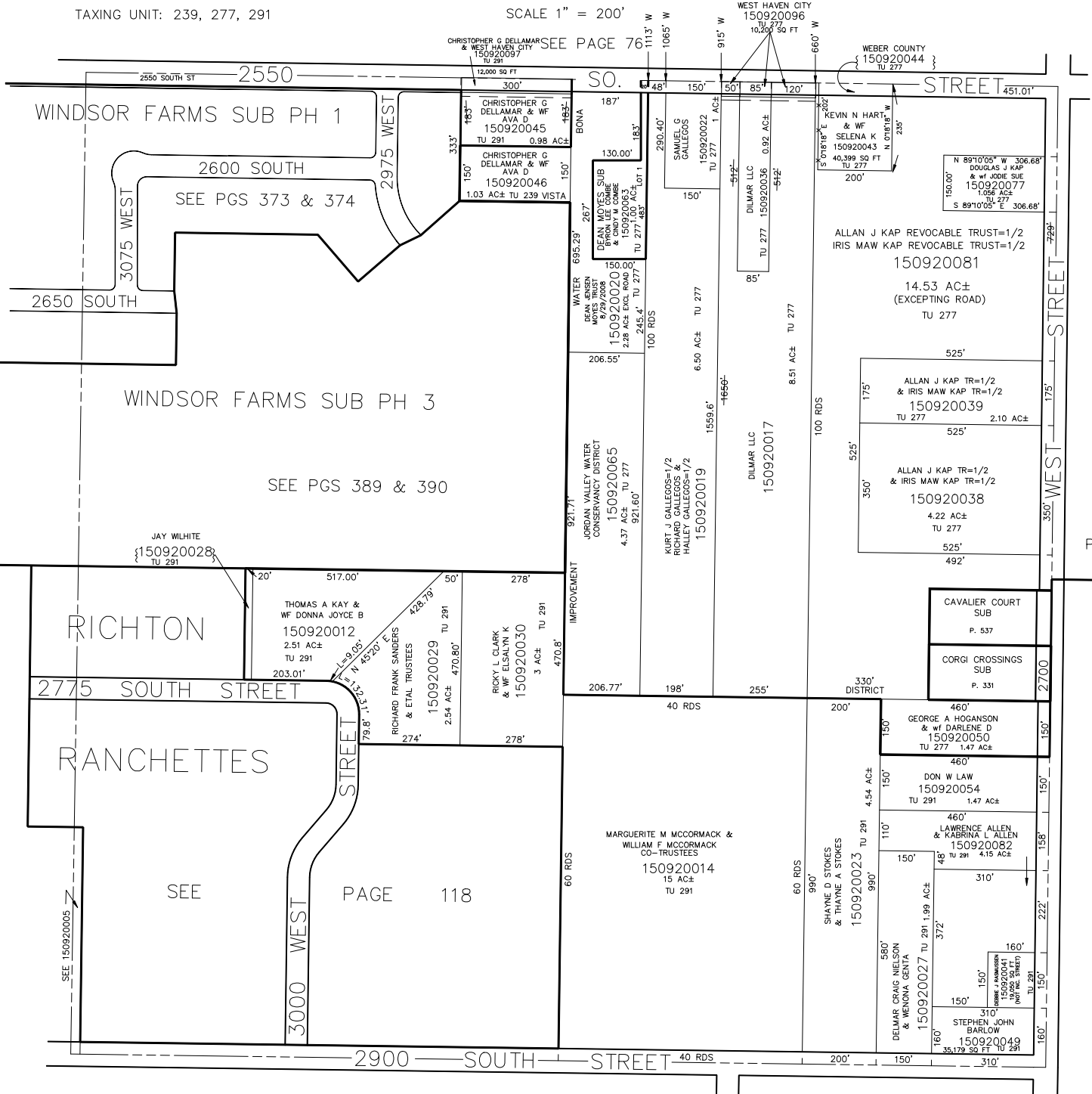


N.E. 1/4
SECTION 34, T.6N., R.2W., S.L.B. & M.

IN WEST HAVEN CITY

TAXING UNIT: 239, 277, 291

SCALE 1" = 200'



SEE PAGE 76

WEST HAVEN CITY 150920096
TU 277
10,200 SQ FT

WEBER COUNTY 150920044
TU 277

N 89°10'05" W 306.68'
DOUGLAS J KAP
& W JOSE SUE
150920077
1.056 AC±
TU 277
S 89°10'05" E 306.68'

ALLAN J KAP REVOCABLE TRUST=1/2
& IRIS MAW KAP REVOCABLE TRUST=1/2
150920081
14.53 AC±
(EXCEPTING ROAD)
TU 277

525'
175'
ALLAN J KAP TR=1/2
& IRIS MAW KAP TR=1/2
150920039
2.10 AC±
TU 277

350'
525'
ALLAN J KAP TR=1/2
& IRIS MAW KAP TR=1/2
150920038
4.22 AC±
TU 277
525'
492'

CAVALIER COURT
SUB
P. 537

CORGI CROSSINGS
SUB
P. 331

460'
150'
GEORGE A HOGANSON
& Wf DARLENE D
150920050
TU 277 1.47 AC±

460'
150'
DON W LAW
150920054
TU 291 1.47 AC±

460'
150'
LAWRENCE ALLEN
& KABRINA L ALLEN
150920082
TU 291 4.15 AC±

580'
150'
DELMAR CRAIG NELSON
& MENONA GENTA
150920027 TU 291 1.99 AC±

150'
150'
STEPHEN JOHN
BARLOW
150920049
TU 291 35,179 SQ FT

SEE PAGE 96